



Capped elbows

Iron and aluminium - female to female



Approvals / Characteristics



Features

- Make 90° bends in conduit systems where space is limited
- Act as pull outlets
- Provide access to conductors for maintenance and future system changes
- Maximum volume for bends within a compact overall size
- Screw on cover for ease of installation and removal
- Cover opening on an angle, permitting conductors to be pulled straight through either hub
- Tapered threaded hubs and integral bushing for rigid threaded conduit

Certification and standards

UL Listed and CSA Certified for hazardous locations:

Class I Div 1 & 2 CD

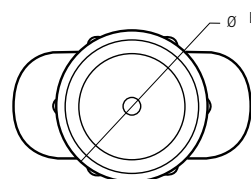
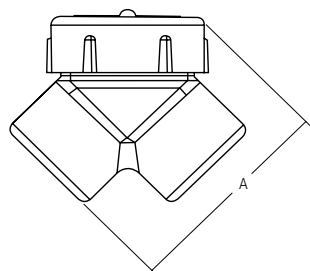
Class II Div 1 EFG

Class III Div 1 & 2

NEMA 3, 4, 7 CD, 9 EFG

Iron and aluminium capped elbows - female to female

Dimensions



Technical specifications

LBY - capped iron elbow - female to female



Type	Hub Size	Dimensions (in)		Throat Dimensions (in)	
		A	B	min.	max.
LBY15-TB	1/2"	2 9/16	2	0.570	0.610
LBY25-TB	3/4"	2 13/16	2 1/4	0.755	0.810
LBY35-TB	1"	3 3/32	2 1/2	0.955	1.035
LBY45-TB	1 1/4"	3 3/4	2 15/16	1.260	1.360
LBY55-TB	1 1/2"	4 1/4	3 3/8	1.470	1.590
LBY65-TB	2"	5 1/2	4	1.880	2.047

GYF - capped aluminium elbow - female to female



Type	Hub Size	Unit Quantity	Standard Package	Weight per 100 (lbs)
GYF-1	1/2"	10	50	23
GYF-2	3/4"	5	25	40
GYF-3	1"	5	25	60
GYF-4 *	1 1/4"	2	10	95
GYF-5	1 1/2"	2	10	95

*Made-to-order items. Consult factory for lead time and minimum quantities. make C, T or L

Size range

All sizes are listed in the tables on each page for each cat. no.

Materials

LBY ductile Iron
GYF copper free aluminium