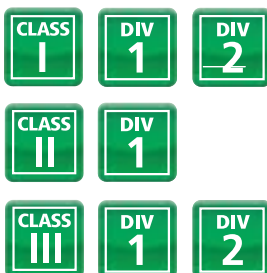




OE series Iron conduit outlet bodies



Approvals / Characteristics



Features

- Protect conductors in threaded rigid conduit
- Act as pulling and splice fittings
- Interconnect lengths of conduit
- Change direction of conduit
- Tapered threaded hubs for ground continuity
- Smooth integral hub bushings to protect conductor insulation when pulling
- Five different hub arrangements
- Accurately machined body with blind tapped screw holes

Certification and standards

UL Listed and CSA Certified for hazardous locations:

Class I Div 1 & 2 CD

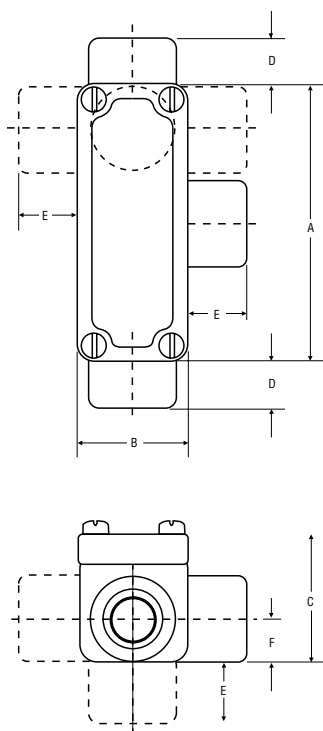
Class II Div 1 EFG

Class III Div 1 & 2

NEMA 3, 4, 7 CD, 9 EFG

Dimensions

Technical specifications



Type	Hub Size	Dimensions (Inches)					
		A	B	C	D	E	F
OEC1-TB	1/2"	4.06	1.62	1.90	0.69	0.88	0.63
OEC2-TB	3/4"	4.35	1.88	2.19	0.69	0.88	0.76
OET1-TB	1/2"	4.06	1.62	1.90	0.69	0.88	0.63
OET2-TB	3/4"	4.35	1.88	2.19	0.69	0.88	0.76
OELL1-TB	1/2"	4.06	1.62	1.90	0.69	0.88	0.63
OELL2-TB	3/4"	4.35	1.88	2.19	0.69	0.88	0.76
OELR1-TB	1/2"	4.06	1.62	1.90	0.69	0.88	0.63
OELR2-TB	3/4"	4.35	1.88	2.19	0.69	0.88	0.76
OELB1-TB	1/2"	4.06	1.62	1.90	0.69	0.88	0.63
OELB2-TB	3/4"	4.35	1.88	2.19	0.69	0.88	0.76

Size range

All sizes are listed in the tables on each page for each cat. no.

Materials

Bodies: Grade 60-45-10 ductile iron
(Complies with ASTM standard A536)

Finish

Electrogalvanized and aluminium acrylic paint