

Snap-tite 75 Series

Thread-to-Connect Coupling



Heavy Duty Threaded Connection in a Wide Range of Sizes

The rugged 75 Series is designed and constructed for high pressure hydraulic service. Although these couplings are used in a broad variety of heavy duty applications, a primary usage is in oil fields and offshore drilling. Other applications include cranes, power tongs, horizontal boring and dewatering.

Available in sizes 3/4" through 4", in steel or stainless steel construction. The 3/4" size has a hex nut sleeve. All other sizes have a wing nut style connection.



Contact Information: 75 Series Features:

信德迈科技(北京)有限公司
北京朝阳区望京SOHO-T1-C座2115室
电话：010-8428 2935
传真：010-8428 8762

E-mail : sales@cnmec.biz
Http : [//www.cnmec.biz](http://www.cnmec.biz)

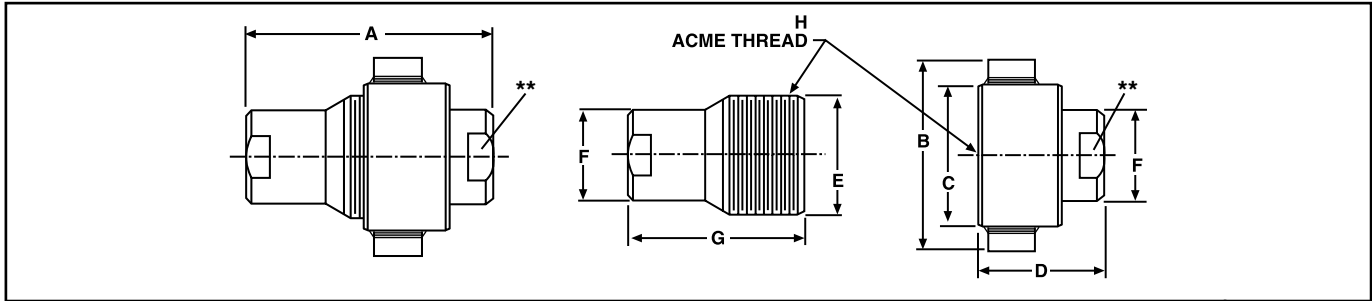
- Connect under residual pressure
- Up to 5,000 psi (345 bar) rated pressures
- Thread-to-connect
- Rugged steel construction with Zinc Trivalent Chromate plating
- Stainless steel construction also available
- Wide range of sizes
- Choice of seal materials to handle a variety of fluids
- DBP version is "Fire Safe" rated to API 16D



ENGINEERING YOUR SUCCESS.

Technical and Dimensional Information

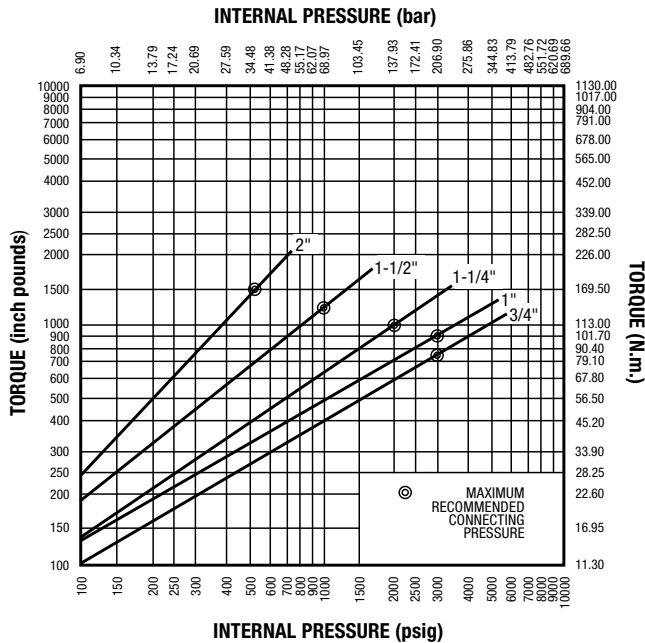
3/4" thru 4"



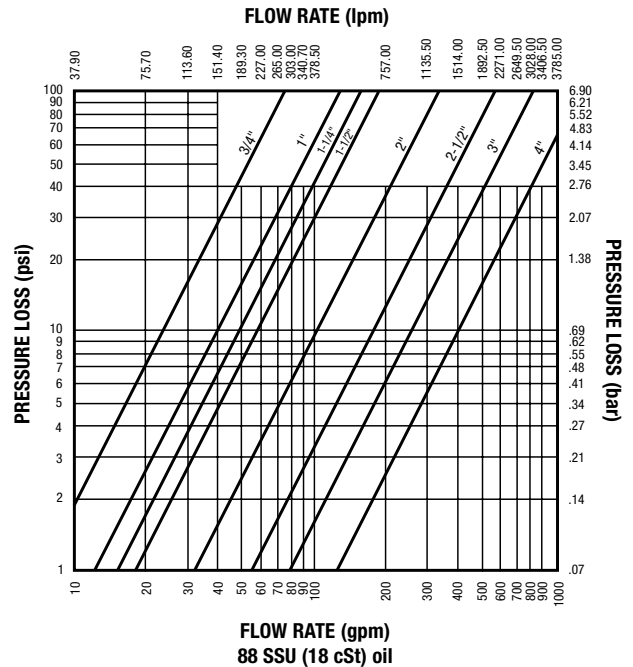
Size	A		B		C (Dia.)		D		E (Dia.)		F		G		H (ACME)
	in	mm	in	mm	in	mm	in	mm	in	mm	in	mm	in	mm	
3/4"	4.85	123.19			1.87*	47.50*	2.84	72.14	1.75	44.45	1.35	34.29	3.27	83.06	1-3/4"-8
1"	6.04	153.32	4.25	107.95	2.75	69.85	3.45	87.63	2.25	57.15	1.77	44.96	4.17	105.92	2-1/4"-6
1-1/4"	7.76	197.10	4.75	120.65	3.25	82.55	4.40	111.76	2.62	66.55	2.14	54.36	5.36	136.14	2-5/8"-6
1-1/2"	8.70	220.98	5.75	146.05	3.75	95.25	5.04	128.02	3.24	82.30	2.50	63.50	5.97	151.64	3-1/4"-4
2"	10.05	255.27	6.75	171.45	4.75	120.65	6.07	154.18	4.00	101.60	3.25	82.55	7.05	179.07	4"-4
2-1/2"	10.13	257.30	8.00	203.20	6.00	152.40	5.29	134.37	5.00	127.00	3.38	85.85	7.46	189.48	5"-4
3"	10.58	268.73	8.50	215.90	6.50	165.10	5.84	148.34	6.00	152.40	4.25	107.95	8.26	209.80	6"-4
4"	12.36	313.94	11.00	279.40	7.00	177.80	7.11	180.59	6.63	168.40	5.25	133.35	9.40	238.76	6-5/8"-4

*Hex dimensions are taken from flat of hex and not across corners.
 Decimal dimensions are ± .06 in. (1.5mm)
 Dimensions are subject to change without notice.
 Part configurations are typical and do not necessarily represent actual appearance.
 **Wrench flats are special order. See "How to Order".

Torque Values for Connecting Under Pressure



Flow Chart



Pressure Ratings

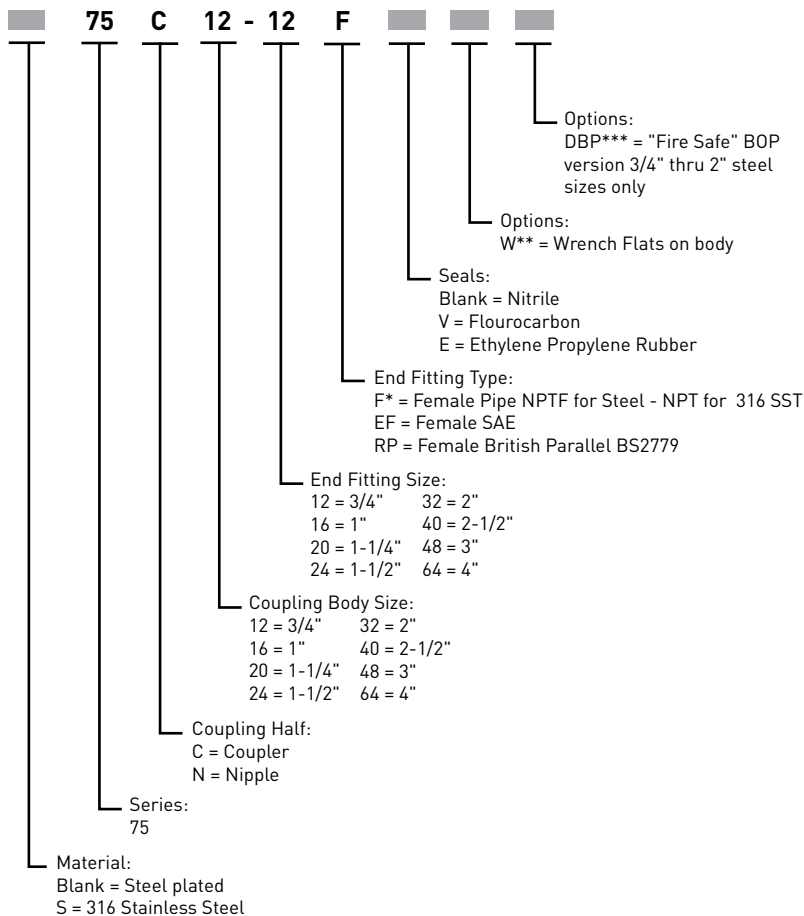
Size	Spillage (cc)	Air Inclusion (cc)	Maximum Working Pressure Steel Only		Maximum Burst Pressure Steel Only		Maximum Working Pressure 316 Stainless (Connected Only)	
			PSI	Bar	PSI	Bar	PSI	Bar
3/4"	8	12	5,000	345	20,000	1379	3,000	207
1"	16	25	5,000	345	20,000	1379	3,000	207
1-1/4"	31	48	5,000	345	15,000	1035	3,000	207
1-1/2"	64	98	5,000	345	15,000	1035	3,000	207
2"	141	205	5,000	345	15,000	1035	3,000	207
2-1/2"	204	368	3,000	207	6,000	414	-	-
3"	320	480	3,000	207	6,000	414	-	-
4"	400	610	400	28	1,000	69	-	-

Burst pressures listed were taken at the point at which failure rendered the quick-disconnect inoperative. (Proof pressure equals 1-1/2 times the operating pressure).
NOTE: Pressure Ratings were established under static pressure conditions.

For impulse applications, multiply the above pressure ratings by .6 for approximate pressure ratings.

-Contact QCD

Ordering Information



Dust Plugs and Caps

Size	Dust Plug	Dust Cap
3/4"	75MDP-12	75MDC-12
1"	75MDP-16	75MDC-16
1-1/4"	75MDP-20	75MDC-20
1-1/2"	75MDP-24	75MDC-24
2"	75MDP-32	75MDC-32
2-1/2"	75MDP-40	75MDC-40
4"	75MDP-64	75MDC-64

Repair Kits

Size	Coupler Kit	Nipple Kit
3/4"	75C12-SPK	75N12-SPK
1"	75C16-SPK	75N16-SPK
1-1/4"	75C20-SPK	75N20-SPK
1-1/2"	75C24-SPK	75N24-SPK
2"	75C32-SPK	75N32-SPK
2-1/2"	75C40-SPK	75N40-SPK
4"	75C64-SPK	75N64-SPK

Each kit contains a valve assembly, spring and guide stop.

Consult QCD for "DBP" option seal kits.

* For sizes up to 3", NPTF threads. For sizes over 3", NPT threads.

**Not available on 2" EF coupler. Standard on 2-1/2" and larger sizes (code not needed).

***DBP available in 3/4" through 2" sizes. Steel material only.

*Seal material code not applicable with DBP option-leave blank.

Note: Not all configurations are standard product offering.
Contact QCD for price and delivery.



联系方式

信德迈科技(北京)有限公司 CNMEC Technology

地址：北京朝阳区望京SOHO-T1-C座2115室

邮编：100102

电话：010 - 8428 2935 , 8428 9077

手机：13910962635 李小姐

传真：010 - 8428 8762

Email：sales@cnmec.biz

Http://www.cnmec.biz



Snap-tite Adds "FIRE-SAFE" Drilling Blow-Out Prevention (DBP) Option to its 75 Series Screw-to-Connect Quick Disconnect Product Line:



UNION CITY, July 1, 2007 - Snap-tite's Quick Disconnect & Valve Division announces the release of a Lloyd's Register certified "FIRE-SAFE" version of 75 Series Screw-to-Connect Quick Disconnect Coupling. It is approved for use on Blow-Out Prevention (BOP) Circuits used in the Oil and Gas Industry. This third-party certification (Lloyd's Register Certificate NAO 0701023/1) verifies that this product meets the standards of API 16D and the Alberta Energy and Utilities Board - EUB Directive #36. These units were tested at 700°C (1300°F) fire exposure for 5 minutes at full operating pressure without loss of pressure or leakage.

The "FIRE-SAFE" rating has become a requirement for couplings used in BOP circuits in Western Canada and is being requested by oil and gas production companies throughout North America and other parts of the world. The design ensures that the coupling will maintain seal integrity during a short term fire to prevent spillage of a potential fuel source.

The -DBP "Fire Safe" option is available in ¾", 1", & 1 ¼" Steel units. Consult factory for additional material or size options.

Please refer to bulletin "01-0001BE-0607" titled: **75 Series Thread-to-Connect Couplings**, for additional information.



New Sizes!

75 Series – DBP

for use in

Drilling Blowout Prevention (BOP) circuits



Snap-tite has expanded its 75 Series product offering by now certifying the 1½" and 2" units in accordance with API 16D and the EUB Directive #36.

The API (American Petroleum Institute) and the EUB (Alberta Energy and Utilities Board) specifications required our units to be tested at 700 deg C (1300 deg F) fire exposure for 5 minutes at operating pressure without loss of pressure or leakage. It is often referred to as the "fire safe" rating. Testing on the Snap-tite units was completed at Southwest Research Institute and certified by Lloyd's Register.

The "fire safe" rating has become a requirement for couplings used in Blowout Preventer (BOP) circuits. Snap-tite now offers this option in ¾" through 2" size units.

The "fire safe" option is specified by placing a "- DBP" at the end of the standard part number and will be marked on the assembly. Updated 75 Series literature is currently in process.

75 系列

螺纹连接型



特征:

- 螺纹连接型快换
- 最大尺寸可达4"
- 可在背压下连接
- 可选碳钢和不锈钢材料

应用举例:

- 油田设备
- 海工行业
- 发动机测试台

75 系列 - 技术参数

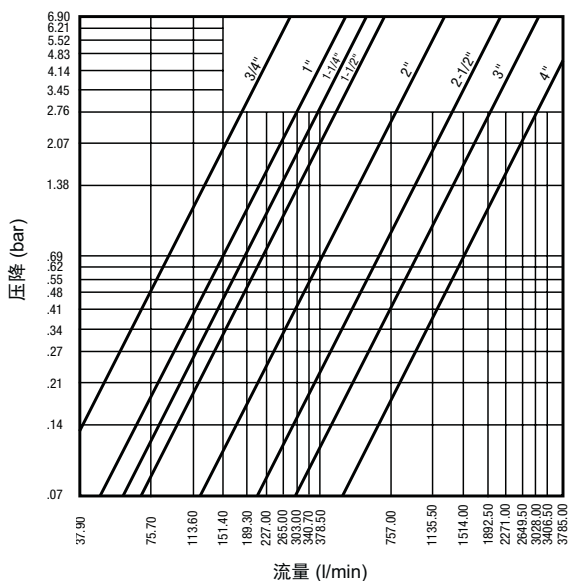
本体尺寸 inch		3/4	1	1 1/4	1 1/2	2	2 1/2	3	4
额定压力 bar	碳钢	345	345	345	345	345	207	207	28
	不锈钢	207	207	207	207	207	--	--	--

注:

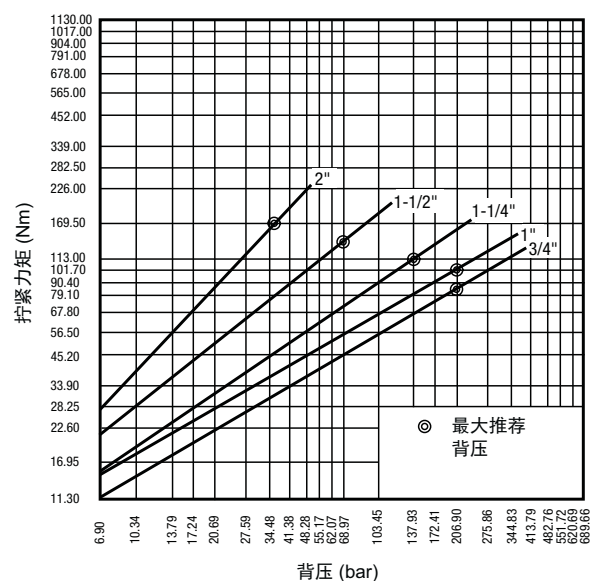
1. 本体材料: 碳钢, 316不锈钢
2. 密封材料及温度范围: 丁腈橡胶: -40°C 至 +100°C
3. 额定压力: 该额定压力为静压状态下的最大工作压力, 应用于动态压力场合时, 快换的最大工作压力约为所列值的0.6倍。爆破压力为额定压力的2~4倍, 具体请咨询派克销售或技术人员。

流量 - 压降曲线:

测试流体: 液压油, 粘度 18 cSt



在背压下连接时拧紧力矩表:



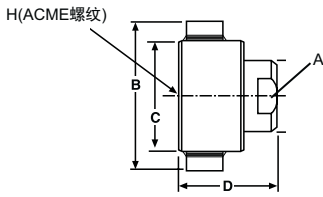
A 软管, 接头及设备

B 硬管接头及设备

C 快换接头

D 其他产品

75 系列 - 阴接头

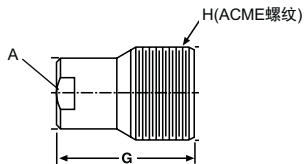


本体尺寸 inch	型号 碳钢	工作压力 bar	型号 不锈钢	工作压力 bar	螺纹 A	总长 D mm	最大直径 B mm	螺纹 H ACME
3/4	75C12-12F	345	S75C12-12F	207	3/4-14 NPTF**	72	1 7/8" ***	1 3/4-8
3/4	75C12-12RP	345	S75C12-12RP	207	G 3/4	72	1 7/8" ***	1 3/4-8
1	75C16-16F	345	S75C16-16F	207	1-11 1/2 NPTF**	88	108	2 1/4-6
1	75C16-16RP	345	S75C16-16RP	207	G 1	88	108	2 1/4-6
1 1/4	75C20-20F	345	S75C20-20F	207	1 1/4-11 1/2 NPTF**	112	121	2 5/8-6
1 1/4	75C20-20RP	345	S75C20-20RP	207	G 1 1/4	112	121	2 5/8-6
1 1/2	75C24-24F	345	S75C24-24F	207	1 1/2-11 1/2 NPTF**	128	146	3 1/4-4
1 1/2	75C24-24RP	345	S75C24-24RP	207	G 1 1/2	128	146	3 1/4-4
2	75C32-32F	345	S75C32-32F	207	2-11 1/2 NPTF**	154	172	4-4
2	75C32-32RP	345	S75C32-32RP	207	G 2	154	172	4-4
2 1/2	75C40-40F	207	--	--	2 1/2-8 NPTF**	135	203	5-4
3	75C48-48F	207	--	--	3-8 NPTF**	149	216	6-4
4	75C64-64F	28	--	--	4-8 NPT	181	280	6 5/8-4

** 不锈钢快换接头的螺纹为 NPT。

***3/4" 快换的螺母外形为不带翼的六角对方。

75 系列 - 阳接头



本体尺寸 inch	型号 碳钢	工作压力 bar	型号 不锈钢	工作压力 bar	螺纹 A	总长 G mm	连接后外露长 度* mm	螺纹 H ACME
3/4	75N12-12F	345	S75N12-12F	207	3/4-14 NPTF**	83	40	1 3/4-8
3/4	75N12-12RP	345	S75N12-12RP	207	G 3/4	83	40	1 3/4-8
1	75N16-16F	345	S75N16-16F	207	1-11 1/2 NPTF**	106	48	2 1/4-6
1	75N16-16RP	345	S75N16-16RP	207	G 1	106	48	2 1/4-6
1 1/4	75N20-20F	345	S75N20-20F	207	1 1/4-11 1/2 NPTF**	136	61	2 5/8-6
1 1/4	75N20-20RP	345	S75N20-20RP	207	G 1 1/4	136	61	2 5/8-6
1 1/2	75N24-24F	345	S75N24-24F	207	1 1/2-11 1/2 NPTF**	152	70	3 1/4-4
1 1/2	75N24-24RP	345	S75N24-24RP	207	G 1 1/2	152	70	3 1/4-4
2	75N32-32F	345	S75N32-32F	207	2-11 1/2 NPTF**	179	76	4-4
2	75N32-32RP	345	S75N32-32RP	207	G 2	179	76	4-4
2 1/2	75N40-40F	207	--	--	2 1/2-8 NPTF**	190	68	5-4
3	75N48-48F	207	--	--	3-8 NPTF**	210	59	6-4
4	75N64-64F	28	--	--	4-8 NPT	239	75	6 5/8-4

* 该尺寸为阳接头与对应的阴接头连接后无法插入部分的长度。

** 不锈钢快换接头的螺纹为 NPT。

样本尺寸仅供参考，请以实际产品尺寸为准。

75 系列 - 防尘盖		
本体尺寸 inch	型号 阴接头防尘塞 碳钢	型号 阳接头防尘盖 碳钢
3/4	75MDP-12	75MDC-12
1	75MDP-16	75MDC-16
1 1/4	75MDP-20	75MDC-20
1 1/2	75MDP-24	75MDC-24
2	75MDP-32	75MDC-32
2 1/2	75MDP-40	75MDC-40
3	75MDP-48	75MDC-48
4	75MDP-64	75MDC-64

75 系列 - 密封包		
本体尺寸 inch	型号 阴接头密封包	型号 阳接头密封包
3/4	75C12-SPK	75N12-SPK
1	75C16-SPK	75N16-SPK
1 1/4	75C20-SPK	75N20-SPK
1 1/2	75C24-SPK	75N24-SPK
2	75C32-SPK	75N32-SPK
2 1/2	75C40-SPK	75N40-SPK
3	75C48-SPK	75N48-SPK
4	75C64-SPK	75N64-SPK

注: 密封包内包含一个阀芯, 一个弹簧及一个挡圈。

75 系列 - 可选密封材料及其他:

代码	描述	型号举例
后缀 E	三元乙丙橡胶 EPDM	75C12-12FE
后缀 V	氟橡胶 FKM	75C12-12FV
后缀 W	本体尾端带扳手面	75C12-12FW*
后缀 -DBP	符合API 16D的"Fire Safe"要求	75C12-12F-DBP**

具体型号是否可供货请联系派克销售或技术人员。
 * 3/4"-2"的标准快换本体尾端无扳手面, 需要时请在型号后加"W"; 2 1/2"-4"的标准快换型号已带扳手面, 无须再加"W"。
 **该型式仅适用于3/4"-2"的碳钢材料。
 75系列还可提供其他尾端螺纹类型等。需要更多75系列的信息请联系派克销售或技术人员。