

# J50000 Series



Eaton's J50000 Series is commonly seen in injection molding applications on cooling and heating lines. Stainless steel and vibration resistant structure allows for use in demanding cooling and heating environments.

## Product Features

- Offers double sealing when connected
- Vibration resistant
- Flat face valves with ball locking
- Standard body material: Stainless steel
- Standard seal material: FKM

## Physical Characteristics

DN/ND (mm)	Max. Operating Pressure		Rated Flow		Fluid Loss ml max.
	(bar)	(psi)	(lpm)	(gpm)	
6	50	725	18	4.76	0.01
9	50	725	43	11.36	0.02

## Applications & Markets

- Injection Molding
- Electronic Cooling
- Heat-transfer Fluid

## Temperature

-15 C + 150 C / +5 F +302 F

-15 C + 200 C / +5 F +392 F

## Flow Data

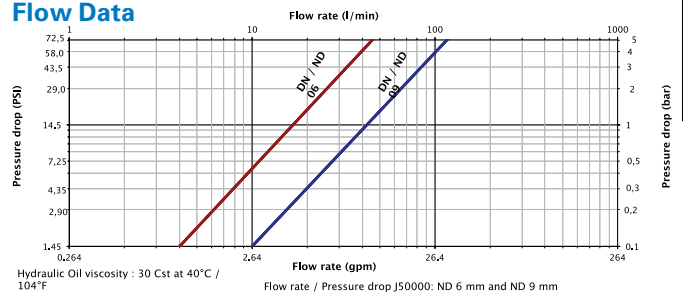


Figure 1

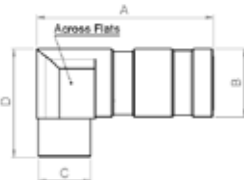


Figure 2

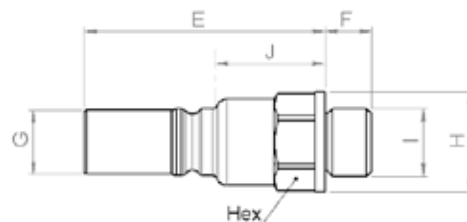


Figure 3

DN/ND (mm)	Socket/Female Part Number	Coupling Type	Connection (F)	Fig.	Dimensions				
					L (mm)	L1 (mm)	ø1 (mm)	Hex (mm)	
6	JX5062614	Female Thread	G 1/4	1	60	-	22	20	
9	JX5092638	Female Thread	G 3/8	1	74.5	-	28	24	
6	JX5068214	90° Female Thread	G 1/4	2	57.5	35	22	22	
DN/ND (mm)	Plug/Male Part Number	Coupling Type	Connection (F)	Fig.	Dimensions				
					L (mm)	A (mm)	ø1 (mm)	ø2 (mm)	Hex (mm)
6	JX5067215	Male Thread	G 1/4	3	44	9	19.5	12.5	17
9	JX5097239	Male Thread	G 3/8	3	56	10	27	17	24

# J70000 Series

FLUID TRANSFER  
AND HYDRAULIC



Eaton's J70000 Series is commonly seen in injection molding applications on cooling and heating lines. Brass and vibration resistant structure allows for use in demanding cooling and heating environments.

PNEUMATIC

## Product Features

- Standard body material: Brass
- Standard seal material: Viton

## Physical Characteristics

DN/ND	Max. Operating Pressure		Temperature
	(bar)	(psi)	
8	15	217	-15 °C + 200 °C / +5 °F +392 °F
12	15	217	-15 °C + 110 °C / +5 °F +230 °F with identification ring

SPECIAL APPLICATIONS

## Applications & Markets

- Injection Molding
- Cooling water
- Heat-transfer fluid

DIAGNOSTIC

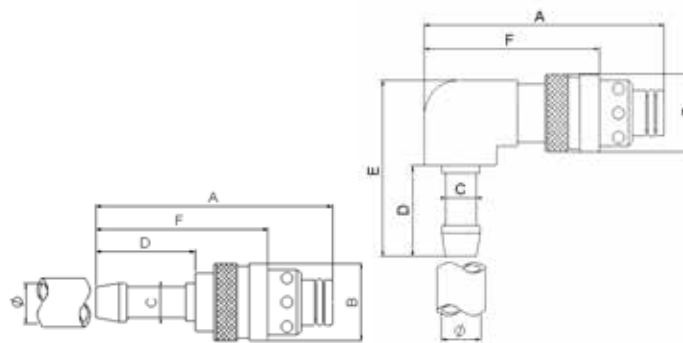


Figure 1

Figure 2

AGRICULTURE

DN/ND	Socket/ Female Part Number	Coupling Type	Hose Size ø	Fig.	Dimensions										Weight	
					A	B	C	D	F	A	B	C	D	F	(lbs)	(g)
8	JL7086789	Plug with straight hose tail	8 mm	1	2.38	0.79	0.31	1.08	1.77	60.5	20	8	27.5	45	0.104	47
8	JL7086701	Plug with straight hose tail	10 mm	1	2.38	0.79	0.39	1.08	1.77	60.5	20	10	27.5	45	0.110	50
8	JL7086712	Plug with straight hose tail	12 mm	1	2.60	0.79	0.47	1.30	1.99	66	20	12	33	50.5	0.119	54
12	JL7126713	Plug with straight hose tail	13 mm	1	2.95	1.10	0.51	1.30	2.17	75	28	13	33	55	0.271	123
12	JL7126716	Plug with straight hose tail	16 mm	1	2.95	1.10	0.63	1.30	2.17	75	28	16	33	55	0.291	132

REFRIGERANT

DN/ND	Plug/Male Part Number	Coupling Type	Hose Size ø	Fig.	Dimensions										Weight			
					A	B	C	D	E	F	A	B	C	D	E	F	(lbs)	(g)
8	JL7088289	Plug with 90° hose tail	8 mm	2	2.17	0.79	0.31	1.08	1.93	1.56	55	20	8	27.5	49	39.5	0.179	81
8	JL7088201	Plug with 90° hose tail	10 mm	2	2.17	0.79	0.39	1.08	1.93	1.56	55	20	10	27.5	49	39.5	0.181	82
8	JL7088212	Plug with 90° hose tail	12 mm	2	2.17	0.79	0.47	1.30	2.17	1.56	55	20	12	33	55	39.5	0.190	86

# J70000 Series

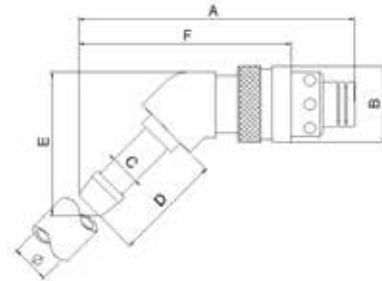


Figure 3

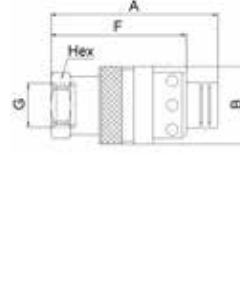


Figure 4

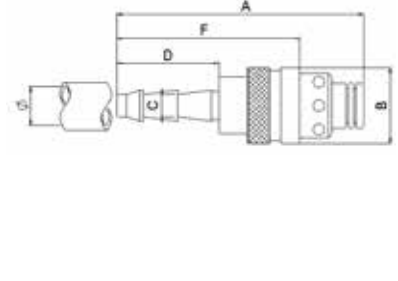


Figure 5

DN/ND	Plug/Male Part Number	Coupling Type	Hose Size ø	Fig.	Dimensions						Weight							
					A	B	C	D	E	F	(lbs)	(g)						
8	JL7088389	Plug with 135° hose tail	8 mm	3	2.78	0.79	0.31	1.08	1.44	2.17	70.5	20	8	27.5	36.5	55	0.152	69
8	JL7088301	Plug with 135° hose tail	10 mm	3	2.80	0.79	0.39	1.08	1.46	2.19	71	20	10	27.5	37	55.5	0.154	70
12	JL7088312	Plug with 135° hose tail	12 mm	3	2.97	0.79	0.47	1.30	1.63	2.36	75.5	20	12	33	41.5	60	0.165	75

DN/ND	Plug/Male Part Number	Coupling Type	Thread Female G	Fig.	Dimensions						Weight			
					A	B	F	Hex	A	B	F	Hex	(lbs)	(g)
8	JL7086214	Plug with female thread	G 1/4	4	1.77	0.79	1.18	0.67	45	20	30	17	0.119	54
12	JL7126212	Plug with female thread	G 1/2	4	2.28	1.10	1.52	0.94	58	28	38.5	24	0.300	136

DN/ND	Plug/Male Part Number	Coupling Type	Hose Size ø	Fig.	Dimensions						Weight					
					A	B	C	D	F	A	B	C	D	F	(lbs)	(g)
8	JL7086388	Plug with straight push-on type hose tail	9.5 mm (3/8)	5	2.28	0.79	0.26	0.94	1.89	58	20	6.5	24	48	0.110	50
8	JL7086312	Plug with straight push-on type hose tail	12.7 mm (1/2)	5	2.52	0.79	0.50	1.10	2.15	64	20	12.7	28	54.5	0.119	54

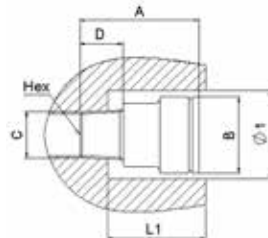


Figure 6

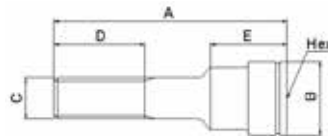


Figure 7

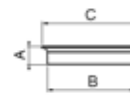


Figure 8

DN/ND	Plug/Male Part Number	Coupling Type	Thread Size (Male)	Fig.	Dimensions						Weight					
					A	B	C	D	Hex	A	B	C	D	Hex	(lbs)	(g)
8	JL7083618	Socket with male thread	R 1/8	6	1.10	0.83	0.38	0.30	0.20	28	21	9.6	7.5	5	0.046	21
8	JL7083614	Socket with male thread	R 1/4	6	1.22	0.83	0.51	0.43	0.31	31	21	13	11	8	0.053	24
8	JL7083638	Socket with male thread	R 3/8	6	1.22	0.83	0.65	0.45	0.39	31	21	16.5	11.5	10	0.066	30
12	JL7123638	Socket with male thread	R 3/8	6	1.56	1.26	0.65	0.45	0.39	39.5	32	16.5	11.5	10	0.141	64
12	JL7123612	Socket with male thread	R 1/2	6	1.61	1.26	0.82	0.55	0.47	41	32	20.8	14	12	0.165	75

DN/ND	Plug/Male Part Number	Coupling Type	Thread Size (Male)	Fig.	Dimensions						Weight					
					A	B	C	D	E	A	B	C	D	E	(lbs)	(g)
8	JL7083118	Extended socket with male thread	G 1/8	7	1.97	0.83	0.38	1.06	0.83	50	21	9.6	27	21	0.068	31
8	JL7083218	Extended socket with male thread	G 1/8	7	3.94	0.83	0.38	2.36	0.83	100	21	9.6	60	21	0.117	53
8	JL7083318	Extended socket with male thread	G 1/8	7	5.91	0.83	0.38	2.36	0.83	150	21	9.6	60	21	0.168	76
8	JL7083114	Extended socket with male thread	G 1/4	7	1.97	0.83	0.51	1.06	0.79	50	21	13	27	20	0.084	38
8	JL7083214	Extended socket with male thread	G 1/4	7	3.94	0.83	0.51	2.36	0.79	100	21	13	60	20	0.161	73
8	JL7083314	Extended socket with male thread	G 1/4	7	5.91	0.83	0.51	2.36	0.79	150	21	13	60	20	0.240	109
8	JL7083414	Extended socket with male thread	G 1/4	7	7.87	0.83	0.51	2.36	0.79	200	21	13	60	20	0.317	144

To obtain connected length of coupling add Dimensions F (Fig. 1, 2, 3, 4 or 5) and A (Fig. 6 or Fig. 7) together.

DN/ND	Plug/Male Part Number	Coupling Type	Color	Fig.	Dimensions			Dimensions		
					A	B	C	A	B	C
8	J62P082	Identification ring	Red	8	0.18	0.87	0.96	4.5	22	24.5
8	J62P083	Identification ring	Blue	8	0.18	0.87	0.96	4.5	22	24.5
12	J62P122	Identification ring	Red	8	0.18	1.30	1.42	4.5	33	36
12	J62P123	Identification ring	Blue	8	0.18	1.30	1.42	4.5	33	36

FLUID TRANSFER AND HYDRAULIC

PNEUMATIC

SPECIAL APPLICATIONS

DIAGNOSTIC

AGRICULTURE

REFRIGERANT