

FD85 Series

Thread to Connect



The Eaton FD85 Series is a thread to connect coupling most commonly used in Oil and Gas applications, but can also be found on demanding applications on both mobile and stationary equipment where operating pressures of 5,000 psi are present.

Product Features

- Thread to connect feature allows for use in high vibration and impulse applications
- Standard body material: Zinc trivalent plated carbon steel. Stainless steel construction available upon request.
- Connect under pressure capability up to 5,000 psi (345 bar)
- Standard seal material: Buna-N. FKM seals are available upon request.
- Wing nut design allows for easy connection and disconnection.
- 3/4" design is offered in a hex nut design
- Available sizes include: 3/4", 1", 1 1/2"
- Female NPTF and BSPP ends available.

Physical Characteristics

Body Size (in)	Max. Operating Pressure Connected		Min. Burst Pressure		Air Inclusion	Fluid Loss
	(bar)	(psi)	(bar)	(psi)	cc. max.	cc.max.
3/4	345	5,000	1,379	20,000	10	10
1	345	5,000	1,379	20,000	23	15
1 1/2	345	5,000	1.035	15,000	100	60

Applications & Markets

- Oilfields
- Offshore Drilling
- Construction
- Oil and Gas

FLUID TRANSFER
AND HYDRAULIC

PNEUMATIC

SPECIAL APPLICATIONS

DIAGNOSTIC

AGRICULTURE

REFRIGERANT

FD85 Series Thread to Connect

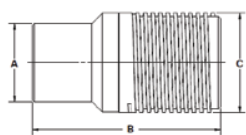


Figure 1

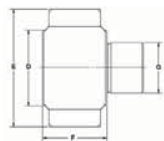


Figure 2

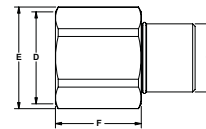


Figure 3

Plugs (Male)

Part Number	Coupling Type	Body Size	Thread	Fig.	Dimensions			A (mm)	B (mm)	C (mm)
					A (in)	B (in)	C (in)			
FD85-1001-12-12	Plug/Male	3/4	3/4-14 NPTF	1	1.38	3.27	1.75	35.1	83.1	44.5
FD85-1017-12-12	Plug/Male	3/4	3/4-14 NPTF	1	1.38	3.27	1.75	35.1	83.1	44.5
FD85-1001-16-16	Plug/Male	1	1 11-1/2 NPTF	1	1.77	4.17	2.25	45.0	105.9	57.2
FD85-1001-16-16	Plug/Male	1	1 11-1/2 NPTF	1	1.77	4.17	2.25	45.0	105.9	57.2
FD85-1017-16-16	Plug/Male	1	1 11-1/2 NPTF	1	1.77	4.17	2.25	45.0	105.9	57.2
FD85-1001-24-24	Plug/Male	1 1/2	1 1/2 11-1/2 NPTF	1	2.50	5.99	2.62	63.5	152.1	66.5
FD85-1017-24-24	Plug/Male	1 1/2	1 1/2 11-1/2 NPTF	1	2.50	5.99	2.62	63.5	152.1	66.5

Sockets (Female)

Part Number	Coupling Type	Body Size	Thread	Fig.	Dimensions				D (mm)	E (mm)	F (mm)	G (mm)
					D (in)	E (in)	F (in)	G (in)				
FD85-1003-16-16	Socket/Female	1	1 11-1/2 NPTF	2	2.67	4.18	2.21	1.77	67.8	106.2	56.1	45.0
FD85-1019-16-16	Socket/Female	1	1 11-1/2 NPTF	2	2.67	4.18	2.21	1.77	67.8	106.2	56.1	45.0
FD85-1003-24-24	Socket/Female	1 1/2	1 1/2 11-1/2 NPTF	2	3.67	5.67	3.31	2.50	93.2	144.0	84.1	63.5
FD85-1019-24-24	Socket/Female	1 1/2	1 1/2 11-1/2 NPTF	2	3.67	5.67	3.31	2.50	93.2	144.0	84.1	63.5

Part Number	Coupling Type	Body Size	Thread	Fig.	Dimensions				D (mm)	E (mm)	F (mm)	G (mm)
					D (in)	E (in)	F (in)	G (in)				
FD85-1003-12-12	Socket/Female	3/4	3/4-NPTF NPTF	3	2.23	3.21	1.76	1.38	56.6	81.5	44.7	35.1
FD85-1019-12-12	Socket/Female	3/4	3/4-NPTF NPTF	3	2.23	3.21	1.76	1.38	56.6	81.5	44.7	35.1

Complete Sets*

Part Number	Coupling Type	Body Size	Thread	Fig.
FD85-1000-12-12	Complete	3/4	3/4-14 NPTF	1 & 3
FD85-1016-12-12	Complete	3/4	3/4-14 NPTF	1 & 3
FD85-1000-16-16	Complete	1	1 11-1/2 NPTF	1 & 2
FD85-1016-16-16	Complete	1	1 11-1/2 NPTF	1 & 2
FD85-1000-24-24	Complete	1 1/2	1 1/2 11-1/2 NPTF	1 & 2
FD85-1016-24-24	Complete	1 1/2	1 1/2 11-1/2 NPTF	1 & 2

*Includes one socket/female and one plug/male half in the outlined size.



Powering Business Worldwide

EatonQuick Disconnect Couplings快速接头代理商：

信德迈科技(北京)有限公司_CNMEC Technology Company
北京朝阳区望京SOHO-T1-C座2115室

邮编：100102

Tel: 010-8428 2935 , 8428 3983

Fax: 010-8428 8762 , 139 1096 2635

Http://www.cnmec.biz

Email: sales@cnmec.biz