

J50000 Series



Eaton's J50000 Series is commonly seen in injection molding applications on cooling and heating lines. Stainless steel and vibration-resistant structure allows for use in demanding cooling and heating environments.

Product Features

- Offers double sealing when connected
- Flat face valves with ball locking
- Standard seal material: FKM
- Vibration resistant
- Standard body material: Stainless steel

Physical Characteristics

DN/ND (mm)	Max. Operating Pressure		Rated Flow		Fluid Loss
	(bar)	(psi)	(lpm)	(gpm)	ml max.
6	50	725	18	4.76	0.01
9	50	725	43	11.36	0.02

Applications & Markets

- Injection Molding
- Electronic Cooling
- Heat-transfer Fluid

Temperature

-15 C + 150 C / +5 F +302 F

-15 C + 200 C / +5 F +392 F

Flow Data

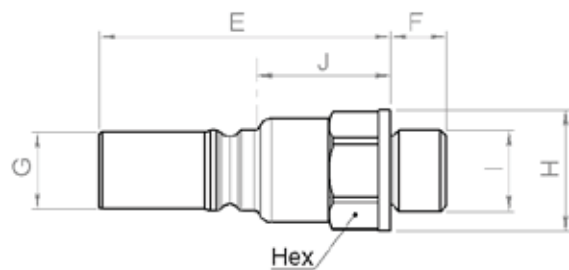
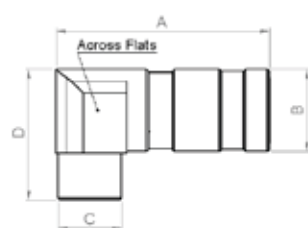
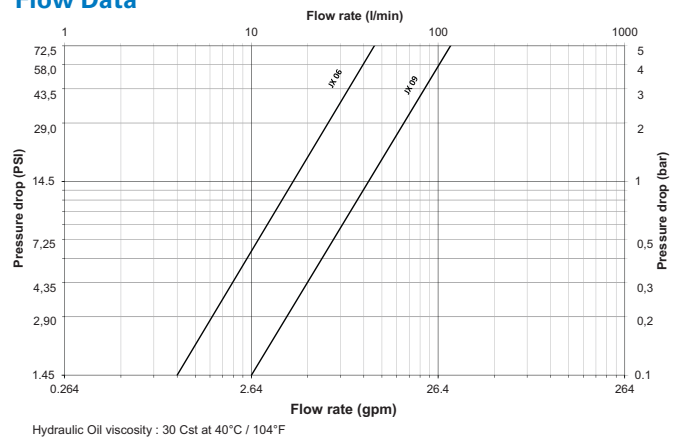


Figure 1

Figure 2

Figure 3

DN/ND (mm)	Socket/Female Part Number	Coupling Type	Connection (F)	Fig.	Dimensions			Hex
					L	L1	ø1	
6	JX5062614	Female Thread	G ¼	1	60	-	22	20
9	JX5092638	Female Thread	G ¾	1	74.5	-	28	24
6	JX5068214	90° Female Thread	G ¼	2	57.5	35	22	22

DN/ND (mm)	Plug/Male Part Number	Coupling Type	Connection (F)	Fig.	Dimensions			Hex
					L	A	ø1	
6	JX5067215	Male Thread	G ¼	3	44	9	19.5	12.5
9	JX5097239	Male Thread	G ¾	3	56	10	27	17