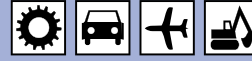


Nominal Diameter

6,5

 = 32 mm²


TEMA Series

T2500

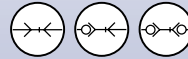
90% of actual size

**Technical Description**

The coupling system is available as double shut-off, straight-through or with single shut-off version. Single shut-off only on the side of the coupling. Also available in stainless steel. From series 2500 double O-ring seal.

Connected length in total: 81 mm**Advantages**

Straight-through – minimum pressure drop. Double safety through a double O-ring seal. A safety closing ring prevents unintentional uncoupling. Corrosion resistant. Compact dimensions.

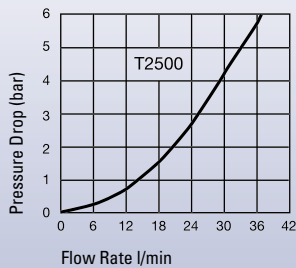
Available Valves**Working Pressure**

See chart.

Working Temperature*

-30°C up to +100°C (NBR)
-25°C up to +200°C (FKM)
depending on the medium.

*At a temperature below -40°C and above +200°C special seals are available on request.

Flow Capacity
 Viscosity for 32cSt at 40°C
 as per ISO 7241/2-2000
**Material****Coupling**

Coupling Body
Sleeve
Locking Ring

Valve
Adapter
Springs
Locking Balls
Seals
Valve Holder (up to 100°C)
Valve Holder (over 100°C)

Plug

Plug Body
Valve
Springs
Seals

Pressures

Bursting Pressure coupled > 1800 bar
Working Pressure uncoupled 300 bar

Standard

Brass, Nickel Plated, Chromated
Brass, Nickel Plated, Chromated
Brass, Zinc-iron coated, Black passivated, sealed
Brass
Brass, Nickel Plated
AISI 301
AISI 420 C
NBR/FKM
Zinc Casting
Brass

Steel Hardened, Zinc Plated, Yellow passivated, sealed
AISI 301
NBR/FKM

Stainless Steel

AISI 316
AISI 316
AISI 316
AISI 316
AISI 301
AISI 420 C
FKM
AISI 316
AISI 316

AISI 316
AISI 316
AISI 301
FKM

Diver's Coupling

Brass, Chromated
Brass, Chromated
Brass, Zinc Chromated
Conversion Coated
Brass
Brass, Chromated
AISI 301
AISI 304
NBR
Zinc Casting

> 1000 bar
250 bar
> 100 bar
10 bar

Couplings

TEMA Series T2500

	Conne- ction A	Hex SW	L mm	D mm	Valve	Working press. in bar	Version	Seal	Part Number	DS
<p>Female Thread</p>	G 1/4	21	64	25	with	450	Standard	NBR	T2510	■
	G 1/4	21	64	25	with	450	Standard	FKM	T2510 V	■□
	G 1/4	21	64	25	with	250	Stainless Steel	FKM	T2510 RV ²⁾	■□
	G 1/4	21	64	25	without	450	Standard	NBR	T2510 UV	■□
	G 1/4	21	64	25	without	450	Standard	FKM	T2510 VUV	■□
	G 1/4	21	64	25	without	250	Stainless Steel	FKM	T2510 RVUV ²⁾	■□
	G 1/4	21	64	25	with	10	Diver's Coupling	NBR	T2510 ELRF	■□

DS = Delivery Status:

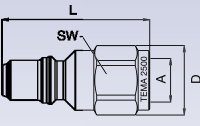
■ in stock

■□ on short call

□□ medium term delivery

Plugs

TEMA Series T2500

	Conne- tion A	Hex SW	L mm	D mm	Valve	Working press. in bar	Version	Seal	Part Number	DS
 <p>Female Thread</p>	G 1/4	19	45	21	with	450	Standard	NBR	T2520	■
	G 1/4	19	45	21	with	450	Standard	FKM	T2520 V	■
	G 1/4	19	45	21	with	250	Stainless Steel	FKM	T2520 RV ²⁾	■ □
	G 1/4	19	45	21	with	250	Stainless Steel	FKM	T2520 RFV ¹⁾ ²⁾	■ □
	G 1/4	19	45	21	with	170	Stainless Steel	FKM	T2520 RFV2 ¹⁾ ²⁾ ⁴⁾	■ □
	G 1/4	19	45	21	without	450	Standard		T2520 UV	■ □
	G 1/4	19	45	21	without	250	Stainless Steel		T2520 RUV ²⁾	■ □
	G 1/4	19	45	21	without	450	Stainless Steel		T2520 RHUV ³⁾	■ □
	G 1/4	19	45	21	without	170	Stainless Steel		T2520 RFUV2 ²⁾ ³⁾	■ □

Seal-Kit for Coupling

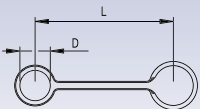
TEMA Series T2500

Description	Material	Part Number	DS
Coupling	NBR	T2500-PSN	■ □
Coupling	FKM	T2500-PSV	■ □
Further sealing materials on request.			

Dust Protection

TEMA Series T2500

Description	L mm	D mm	Material	Color	Part Number	DS
Coupling	145	44	PVC	Blue	T2516	■
Plug	145	42	PVC	Blue	T2526	■
Further colors on request.						



¹⁾ Valve made of brass

²⁾ For pulsating pressure, the pressure must not exceed 50 % of the given value

³⁾ Material, AISI 420 hardened

⁴⁾ Suitable for high pressure water, AISI 303