

Nominal Diameter

30 = 707 mm²

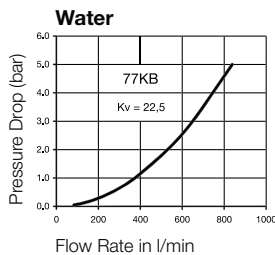
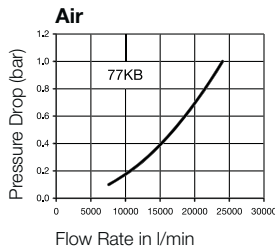
RECTUS Series

77KB


35% of actual size

**Technical Description**

The 77KB series is a double shut-off hydraulic coupling used for liquid media. The plug profile is manufactured in accordance with ISO-7421-1, series B. All versions mentioned below are manufactured from non-rusting stainless steel or POM. This coupling requires two handed operation (the sleeve must be manually pulled back when connecting).

Chart**Advantages**

Simple, yet rugged construction guarantees the highest safety.

Working Pressure

PB = 10 bar (at 50°C), maximum static working pressure with safety factor of 4 to 1.

Working Temperature*

-20°C up to +90°C (NBR)
-40°C up to +90°C (EPDM)
-15°C up to +90°C (FKM)
0°C up to +90°C (FFKM)
depending on the medium

*At a temperature below -20°C and above +90°C special seals are available on request.

Material**Coupling**

Valve Body
Sleeve
Valve
Spring and Locking Ring
Locking Balls
Seals
Spring Plate, Locking Ring

Standard

POM, white
POM, white
AISI 303
AISI 316 Ti
AISI 316
EPDM
AISI 301

Plug

Plug Profile
Valve
Spring
Spring Plate
Seal

POM, white
AISI 303
AISI 316 Ti
AISI 301
EPDM

Coupling**RECTUS Series 77KB**

	Connection A	Hex SW	L mm	D mm	L1 mm	L2 mm	Hex1 SW1	B mm	G mm	Version	Part Number
<p>Female Thread</p>	G 1 1/2	60	133	76	23					Standard	77KB IW48 DEXS

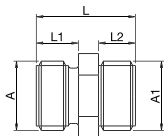
Valved Plug**RECTUS Series 77KB**

	Connection A	Hex SW	L mm	D mm	L1 mm	L2 mm	Hex1 SW1	B mm	G mm	Version	Part Number
<p>Female Thread</p>	G 1 1/2	60	132		23					Standard	77SB IW48 DEX

Male x Male Nipple

RECTUS Fittings

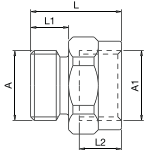
Connection A	Hex SW	L mm	L1 mm	L2 mm	L3 mm	Hex1 SW1	B mm	G mm	Rectu POM Part Number	Rectu CHEM Part Number
G 1/4 x G 1/8	14	19	8	7					DN 13/10DX	DN 13/10FX
G 1/4 x G 1/4	14	19	8	7					DN 13/13DX	DN 13/13FX
G 3/8 x G 1/4	17	28,5	9	9					DN 17/13DX	DN 17/13FX
G 3/8 x G 3/8	21	25	9	9					DN 17/17DX	DN 17/17FX
G 3/8 x G 1/2	21	31,5	9	12					DN 17/21DX	DN 17/21FX



Male x Female Nipple

RECTUS Fittings

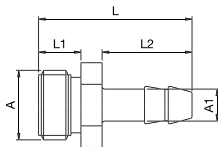
Connection A	Hex SW	L mm	L1 mm	L2 mm	L3 mm	Hex1 SW1	B mm	G mm	Rectu POM Part Number	Rectu CHEM Part Number
G 1/4 x G 1/8	14	22	8	8					RL 13/10DX	RL 13/10FX
G 1/4 x G 1/4	17	25	8	10					RL 13/13DX	RL 13/13FX
G 3/8 x G 1/4	17	21,5	9	10					RL 17/13DX	RL 17/13FX
G 3/8 x G 3/8	21	21,5	9	10					RL 17/17DX	RL 17/17FX
G 3/8 x G 1/2	17	32,5	9	13					RL 17/21DX	RL 17/21FX



Hose Tale Adaptor

RECTUS Fittings

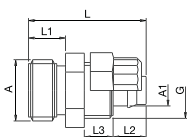
Connection A	Hex SW	L mm	L1 mm	L2 mm	L3 mm	Hex1 SW1	B mm	G mm	Rectu POM Part Number	Rectu CHEM Part Number
G 1/4 x 4 mm	14	29	8	17					GT 13/04DX	GT 13/04FX
G 1/4 x 6 mm	14	29	8	17					GT 13/06DX	GT 13/06FX
G 3/8 x 6 mm	17	39	9	22					GT 17/06DX	GT 17/06FX
G 3/8 x 9 mm	17	39	9	22					GT 17/09DX	GT 17/09FX
G 3/8 x 10 mm	17	39	9	22					GT 17/10DX	
G 3/8 x 13 mm	17	42	9	25					GT 17/13DX	GT 17/13FX



Plastic Screw Connector

RECTUS Fittings

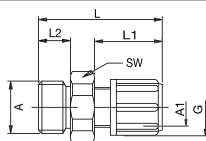
Connection A	Hex SW	L mm	L1 mm	L2 mm	L3 mm	Conn. A1 mm	G mm	Rectu POM Part Number	Rectu CHEM Part Number
G 1/4	14	25	8	13		4 x 6	M 10 x 1	EV 13/06 DX	EV 13/06 FX
G 1/4	14	25	8	13		6 x 8	M 12 x 1	EV 13/08 DX	EV 13/08 FX



Screw Connection for PVDF or PE Hoses

RECTUS Fittings

Connection A	Hex SW	L mm	L1 mm	L2 mm	L3 mm	Conn. A1 mm	G mm	Rectu POM Part Number	Rectu CHEM Part Number
G 1/4	17	31	17	8		4 x 6	M 10 x 1		EV 13/06 FX04
G 1/4	17	35	21	8		6 x 8	M 12 x 1		EV 13/08 FX06
G 3/8	22	38	21	9		6 x 8	M 12 x 1		EV 17/08 FX06
G 3/8	22	45	28	9		9 x 12	M 12 x 1		EV 17/12 FX09
G 3/8	22	45	28	9		10 x 12	M 12 x 1		EV 17/12 FX10

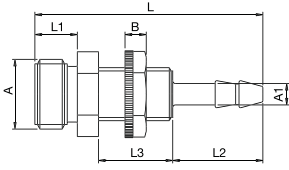


⚠ Please consider our security advices on the pages 12/13 ⚠

Panel Mount, Standard Hose Connection

RECTUS Fittings

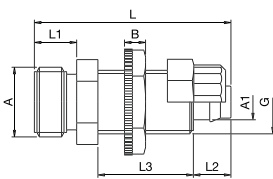
Connection A	Hex SW	L mm	L1 mm	L2 mm	L3 mm	Hex1 SW1	B mm	G mm	Rectu POM	Rectu CHEM
									Part Number	Part Number
G 1/4 x 4 mm	14	43	7	8	14	14	4	M 10 x 1	ET 13/04 DX	ET 13/04 FX
G 1/4 x 6 mm	14	43	8	8	14	17	4	M 12 x 1	ET 13/06 DX	ET 13/06 FX



Panel Mount, Plastic Hose Connection

RECTUS Fittings

Connection A	Hex SW	L mm	L1 mm	L2 mm	L3 mm	Hex1 SW1	B mm	G mm	Rectu POM	Rectu CHEM
									Part Number	Part Number
G 1/4 x 4 x 6 mm	14	37	7	8	18	14	4	M 10 x 1	EK 13/06 DX	EK 13/06 FX
G 1/4 x 6 x 8 mm	14	37	8	8	18	17	4	M 12 x 1	EK 13/08 DX	EK 13/08 FX



⚠ Please consider our security advices on the pages 12/13 ⚠